



# Multidirectional sideloader Multi-Lifter Series B

The sturdy and agile all-round Side Loader

- **Nominal capacity 6600 to 9900 lbs**
- **Lifting height up to 30 ft**
- **Small front part dimension b2 = 33.5"**

## Efficiency

### Energy regeneration

- Energy is regenerated during every lowering and braking process and charges the battery.

## Comfort

### Cabin

- Ergonomically designed cab with crosswise seat position, large side entrance for relaxed fatigue free operating.
- Comfortable seat with hydraulic suspension and adjustable armrest
- Low access height
- Roof integrated, working light in both longitudinal driving directions
- Interior lights of cabin
- Cabin assortment  
Cross seat cabin 31.5", 33.5", 35.4" and 39.4"

### On-board computer

- Situated in steering wheel allowing access to useful information e.g. date/time, battery capacity, steering programs, wheel position, travel speed, maintenance cycles....
- Good visibility of all switches and instruments by operator

### AC drives

- Smooth driving
- High acceleration
- Progressively adjusted lifting control
- Low noise level

### Multidirectional steering

- Dynamic smooth running electro hydraulic steering
- direction pre-selection via sensor button
- Steering program display

### Hydraulics

- Sensitive and precise vario-hydraulic

## Technology

### AC drives

- Modern 80 V current drive system for high capacity

### Control system

- CAN-BUS with less wiring
- Decentralized micro controller system
- High functional safety
- Easy control of performance data

### Braking system

- Service brakes step 1: drive control with energy recovery
- Service brake step 2: electro-magnet brake
- Parking brake: electro-magnet brake
- Parking position: changing the wheels in blocking position

### Hydraulic system

- 14 kW 3phase motor
- precision pump gear wheel with high-pressure
- Movements with limit of travel damping system
- Extremely low operation

### Lifting mast

- Two-stage telescopic mast without free lift (ZT)
- Two-stage telescopic mast with full free lift (ZTV)
- Three-stage telescopic mast with full free lift (DT)

### Chassis

- Steel frame providing high torsional strength and stability
- permanent support of all drive wheels and load wheels

## Load lifting devices

### Fork carriage

- Fork carriage and fork length options to suit every application

## Battery

### Standard battery

- 620Ah trough 66.9" x 16.7"

## Service

### Diagnosis system

- Rapid error display
- Easy fault finding and rectification

### Modular Concept

- Separate function modules for drive, control system, hydraulics, steering
- Fast module exchange
- Easy to open, removable hoods

### CAN-BUS control system

- Easy-to-follow cabling
- Direct programming of function changes from the panel

## Safety

- Prototype-tested design
- Corresponds with the valid EU machine guidelines with CE conformity
- End of aisle safety device with stop via floor magnets

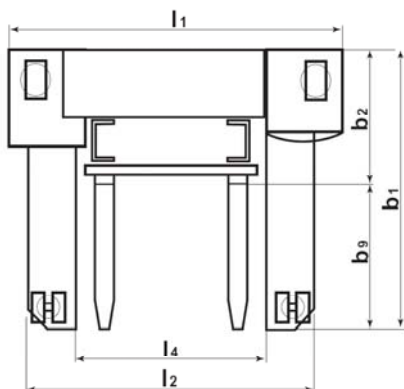
Performance data	Travelling speed with/without load	mph	6.2/7.4 - 5/6.2
	Lifting speed with/without load	fpm	35 / 55
	Lowering speed with/without load	fpm	69 / 29
	Reaching speed with/without load	fpm	43
	Gradeability with/without load S2 30 min.	%	8/10 - 6/8
	Max. gradeability with/without load S2 5 min.	%	10/12 - 8/10

# Multi-Lifter Series B 3000 to 4500 AC: Technical Data

Characteristics						
Drive	Electro					
Operation	Seat					
Capacity Load (Q)	lbs	6600	7700	8800	9900	
Weight						
Dead weight with battery	lbs	12760	13200	13640	14300	
Axle load on load side, load extended, with load	lbs	8800	9460	10120	10340	
Static max wheel load	N/cm <sup>2</sup>	500	520	535	550	
Axle load drive side collapsed load with load	lbs	5720	6160	6600	7040	
Dynamic max. wheel load	N/cm <sup>2</sup>	355	365	375	385	
Dimensions						
Total length drive side frame	l1	in	124"			
Total length load side wheel arm	l2	in	102"			
Width between the wheel arm	l4	in	51"			
Wheels, carriage						
Tire equipment	Polyurethane					
Tire drive side	2 x Ø 16 x 7					
Tire load side	4 x Ø 11 x 4.5					
<i>Optional: Tyre drive side</i>	<i>Vulcanized rubber, 2 x Ø 18 x 8</i>					
Drive						
Drive motor/ Capacity S2 60min	2 unit @ 5,2 kW					
Drive gear	2 centre pivot plates					
Drive control	2 pulse contact controls ~AC technology					
Brake	Electro magnet brake					
Type of battery	620 Ah					
Battery voltage / Nominal capacity K5	V/Ah	80 V / 620 Ah				
Battery dimensions	in	66.9 x 16.7				
Battery weight	lb	3410				

Width till face of fork b2 incl. forks						
Cabin width	bk	in	31.5	33.5	35.5	39.4
With fork carriage GT3a	b2	in	33.5	35.5	37.4	41.3
With fork carriage GT-ZVG	b2	in	34.5	36.4	38.4	42.3
With wide fork carriage BGT	b2	in	37.4	39.4	41.3	45.3
W. wide fork carriage BGT-ZVG	b2	in	37.4	39.4	41.3	45.3
W. wide fork carriage BGTf	b2	in	35.5	37.4	39.4	43.3

Dimensions										
Width	b1	in	67	75	83	90	98	106	114	118
Wheel base	Y	in	48.6	56.5	64.4	72.2	80.1	88.0	95.9	99.8
Nominal width standard b2 = 35.4	b9	in	31	39	47	55	63	71	79	83
Load centre	C	in	16	20	24	28	32	36	40	42



Lifting mast				
Double telescope – lifting mast type ZT without free lift				
lift	lowered	extended	free lift	
h3	h1	h4	h2	
121.5	86.7	149.1	0	
137.3	94.6	164.8	0	
158.3	105.1	185.9	0	
188.5	120.2	216.1	0	
208.8	130.4	236.4	0	
229.1	140.5	256.7	0	
Double telescope – lifting mast type ZTV maximum free lift				
lift	lowered	extended	free lift	
h3	h1	h4	h2	
121.5	86.7	149.1	58.9	
137.3	94.6	164.8	66.8	
158.3	105.1	185.9	77.3	
188.5	120.2	216.1	92.4	
208.8	130.4	236.4	102.6	
229.1	140.5	256.7	112.8	
Triple telescope – lifting mast type DT maximum free lift				
lift	lowered	extended	free lift	
h3	h1	h4	h2	
190.9	98.1	216.7	66.1	
208.7	104.1	234.4	72.0	
232.3	111.9	258.0	79.9	
250.0	117.8	257.8	85.8	
273.6	125.7	299.4	93.7	
291.3	131.6	317.1	99.6	
315.0	139.5	340.7	107.4	
332.7	145.4	358.5	113.3	
356.3	153.3	382.1	121.2	

