

MLR Warehouse Pilot



Accurate warehouse navigation based on optimized movements within the very narrow aisle

Professional Materials Handling Co., Inc.
6932 Hanging Moss Rd
Orlando, FL – 32807
(407) 677 – 0040 info@pmh-co.com

The MLR Warehouse Pilot



The warehouse pilot assists turret truck operators' to locate and travel to warehouse locations in the most efficient and expeditious manner. Once the operator activates the touch screen panel, he or she receives the optimum travel instructions to the destination (pick or deposit location) indicating distance, height and side of the aisle. The warehouse pilot functions similar to automotive navigation systems. The operator retains complete control of the vehicle and manually travels to the destination, placing the load or forks into the desired pallet location.

When selecting the „Auto“ mode of operation, the WAREHOUSE PILOT takes control of the vehicle functions. The vehicle under computer control travels to the desired destination within the aisle on its own – lifting to the appropriate height and can upon release and confirmation of the operator pickup or deposit the load as well.

The warehouse pilot automates and or assists in the process of storage and retrieval. Travel at optimum speeds while lifting and lowering to reach the destination in the minimum of time. Because of this assistance incorrect load placement or retrieving loads from incorrect positions can be reduced possibly eliminated.



Advantages



- Precise Navigation
- Expeditious Deposit & Retrieval operation
- Reduction of incorrect load selection or placement
- Reduction of transport damages
- Adaptation and customization of the system
- Can be added to existing vehicles
- System integration of manually operated vehicles

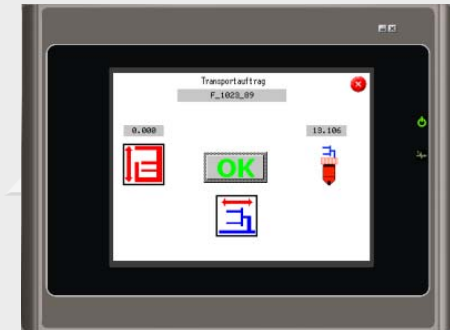
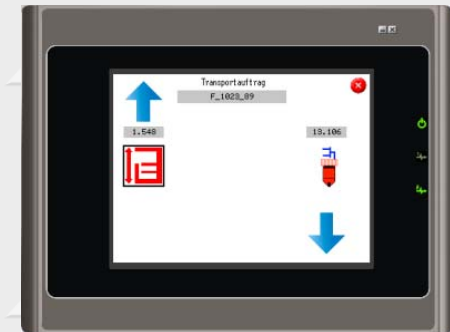


Dual Modes
Auto or Manual

Basic Functions



- Individual Task control and Simple Oversight
- Travel Control
- Position locator and Distance measurement
- Optimizing Travel Speeds
- Destination Control and Automatic Stop
- Height Indicator
- Destination Check – compliance with location



Innovative Display-Graphics
Display Route information

Additional add-ons



Display Task Overview

- Voice Instructions
- Barcodescanner, RFID tag reader
- Interface with Forklift management control system
- Interface Warehouse Management System
- Automatic travel and lift stop
- Automatic load / unload cycle

Start Screen / Basic Model



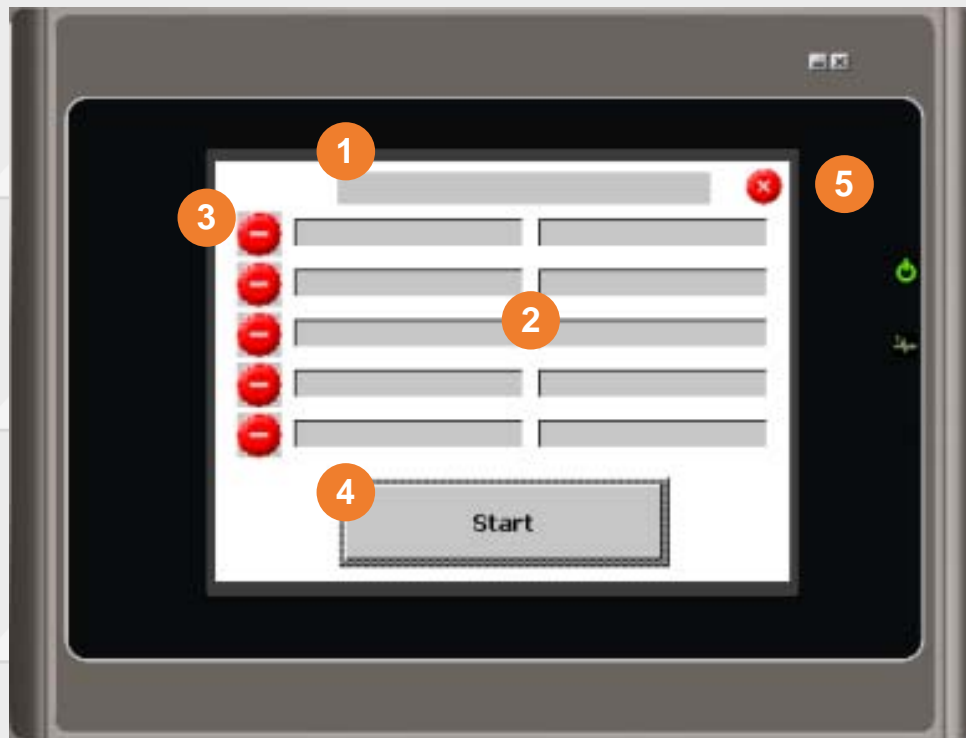
- 1 Welcome screen / Login
- 2 Parameter list / for the operation of the warehouse pilot.
- 3 Selection <Auto>
The Warehouse Pilot receives transport orders from the system automatically.
- 4 Selection <Hand>
The operator enters the transport orders into the Warehouse Pilot manually.

Login



- 1 Login.
Operator <enters> a code to uniquely identify him to the system.

Transport Order Overview



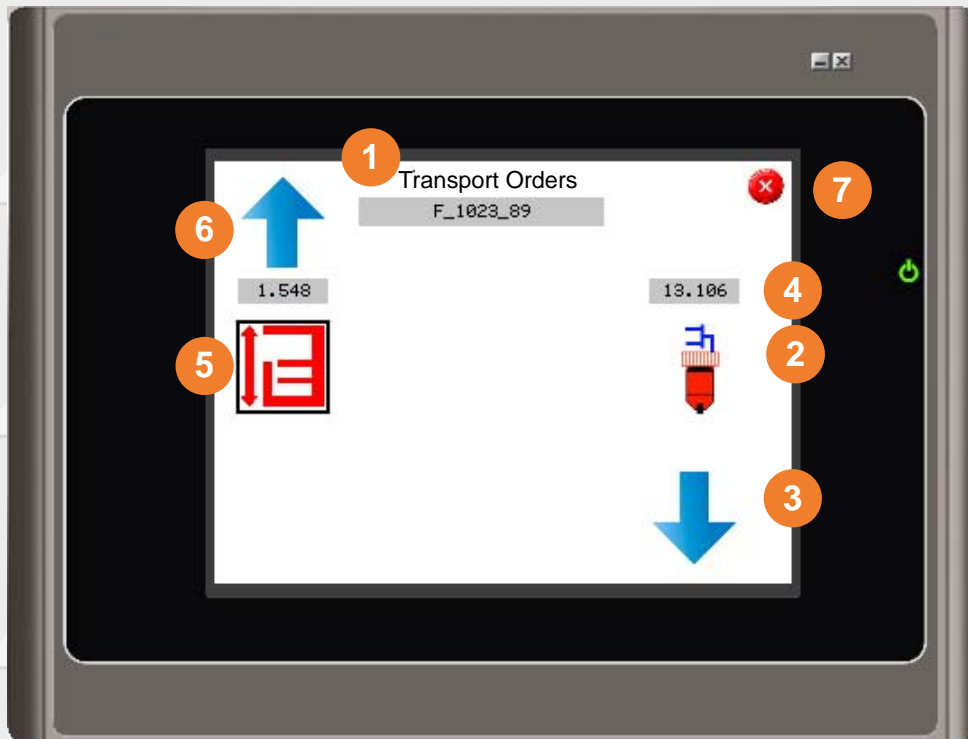
- 1 Display active transport orders.
- 2 List available Transport orders.
Column 1: Start position / Retrieval
Spalte 2: Destination position
- 3 Cancel a Transport order
- 4 Start Navigation /
Confirm Cancel of Transport task
- 5 Close Window

Manual Transport Order Entry



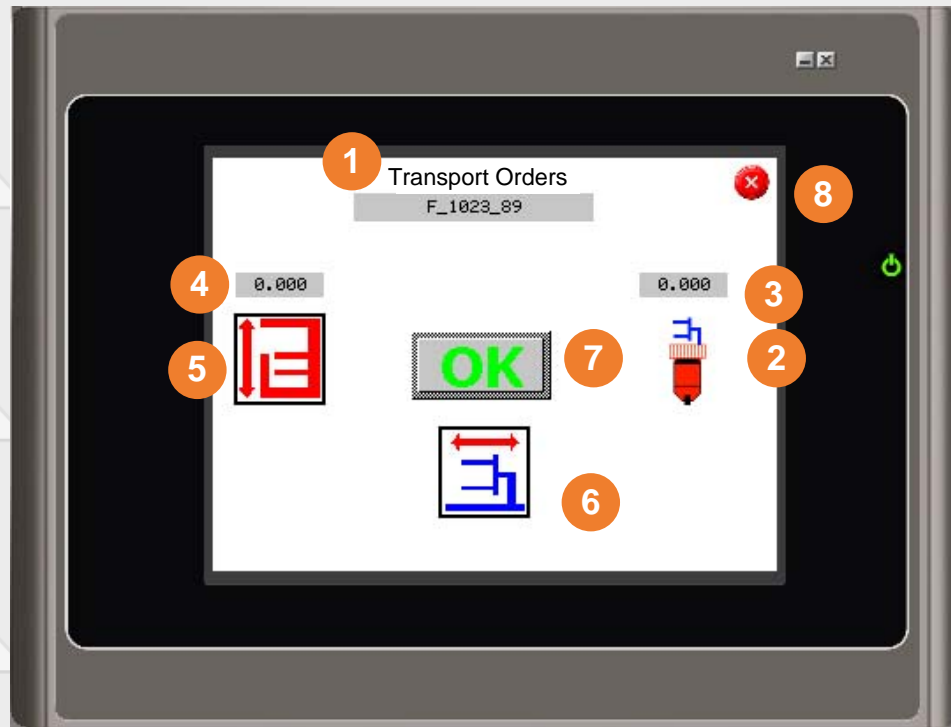
- 1 Entry Pickup Location
- 2 Entry Delivery Location
- 3 Close Window
- 4 Accept Transport Order in the task list
- 5 Display Transport Order Overview
- 6 Start Navigation

Aisle Travel



- 1 Display active Transport Order
- 2 Display Fork Orientation
- 3 Display Travel Direction of vehicle
- 4 Distance to Pick Destination
- 5 Cabin Status
- 6 Display Height difference and direction to Pick Location
- 7 Close Window

Deposit Location



- 1 Display active Transport order
- 2 Display Fork Orientation
- 3 Distance to Deposit Destination
- 4 Display Height difference and direction to Deposit Location
- 5 Cabin Status
- 6 Change Fork Orientation
- 7 <OK> Release Load Delivery
- 8 Close Window